

# A00-270 – SAS BI CONTENT DEVELOPER CERTIFICATION QUESTIONS AND STUDY GUIDE

---

SAS Certified BI Content Developer for SAS 9 (A00-270)



---

## Contents

SAS BI Content Developer Details .....	2
SAS BI Content Developer Syllabus for A00-270 Exam (Study Aid) .....	3
SAS BI Content Developer (A00-270) Sample Questions .....	4

# SAS BI Content Developer Certification Details

---

<b>Exam Name</b>	SAS Certified BI Content Developer for SAS 9
<b>Exam Code</b>	A00-270
<b>Duration</b>	120 Minutes
<b>Exam Questions</b>	60-65 multiple-choice and short-answer questions
<b>Passing Percentage</b>	70%
<b>Negative Marking</b>	No Negative Marking
<b>Partial Credit</b>	No Partial Credit
<b>Training</b>	<a href="#">Creating Business Intelligence for Your Organization: Fast Track</a>
<b>Schedule Your exam</b>	<a href="#">Pearson VUE</a>
<b>Sample Questions</b>	<a href="#">SAS BI Content Developer Certification Sample Question</a>
<b>Recommended Practice tool</b>	<a href="#"><b>SAS BI Content Developer Certification Practice Exam</b></a>

---

# SAS BI Content Developer Certification Syllabus for A00-270 (Study Aid)

---

## INFORMATION CONSUMER REPORTING APPLICATIONS

- Use the SAS Add-In for Microsoft Office
- Use SAS Web Report Studio
- Use SAS Information Delivery Portal

## DATA MANAGEMENT

- Modify an existing SAS Information Map
- Create a New SAS BI Dashboard Indicator
- Create data sources for reporting and analysis
- Interpret permissions and file structures defined in metadata by the platform administrator
- Describe the metadata created and used by the SAS Platform
- Create information map data sources

## CREATING INFORMATION MAPS

- Utilize different data sources
- Use filters and the prompting framework to dynamically subset data
- Create prefilters to subset the information map data

## BUILDING A SAS BI DASHBOARD APPLICATION

- Build SAS BI Dashboard Components
- Build advanced SAS BI Dashboard Components

## BUILDING STORED PROCESSES

- Create a stored process from a SAS Enterprise Guide Project
- Create a stored process from a SAS Program
- Add prompts to a stored process
- Create a stored process to provide a dynamic data source
- Define the macro variables generated for each prompt type
- Create shared prompts

## UTILIZING MULTIDIMENSIONAL (OLAP) DATA SOURCES

- Apply Online Analytical Processing concepts
- Build an OLAP cube with SAS OLAP Cube Studio
- Build an information map from a SAS OLAP Cube

# SAS BI Content Developer Exam (A00-270)

## Sample Questions

- Below are the 10 sample questions which will help you be familiar with SAS Certified BI Content Developer for SAS 9 (A00-270) exam style and Structure.
- These questions are just for demonstration purpose, there are many scenario based question are included in **Premium SAS BI Content Developer Practice Exam**
- Access to all 120+ questions is available only through premium practice exam available to members at [www.analyticsexam.com](http://www.analyticsexam.com)

**Question 1:** When a SAS Web Report Studio report is built, the default behavior is to produce an aggregated report with measures summed. Average is a more appropriate aggregation for an age data item. In the information map, how can the aggregation be changed to average the measures?

- Change the default aggregation function to MEAN on the Properties of the data item.
- After the default aggregation is set, it cannot be changed in the information map.
- Change the measure's classification to MEAN.
- Change the format of the data item to AVERAGEw.d.

**Question 2:** A content developer wants to emphasize the indicator value shown by a dynamic gauge in SAS BI Dashboard. The content developer wants to display the color of the selected range while the other ranges remain neutral. How can this be achieved?

- Change the other colors in the range to be a neutral color.
- Select the gauge type to be a Dynamic Speedometer.
- Check the Ghost checkbox on the select a gauge screen.
- Alter the style to support shadowing.

**Question 3:** Refer to the exhibit.



**A SAS.IdentityGroups filter has been created in SAS Information Map Studio. There is a data item called "Group" that contains different metadata groups.**

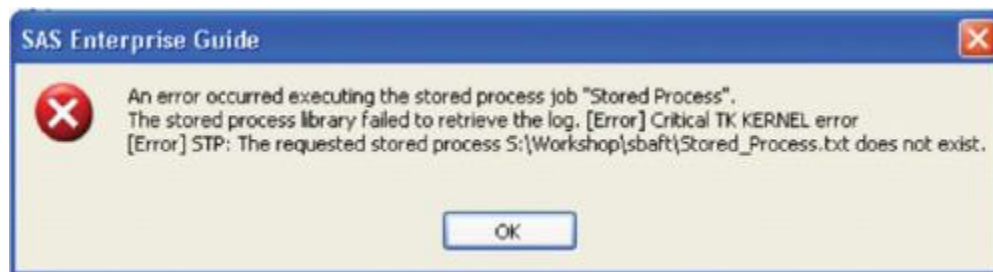
**If the "Group" filter is applied to the map, how will it affect the data?**

- A. All rows will be returned for any group that the user is a member of.
- B. Only rows that belong to the first group are returned.
- C. All rows will be returned for PUBLIC group only.
- D. All rows matching the group identity login are returned.

**Question 4: Which statement is true regarding the SAS My Folder metadata location?**

- A. The My Folder location is a valid place to share content.
- B. Every user with a SAS metadata identity has a My Folder location.
- C. The My Folder location is a temporary work location.
- D. The My Folder location is only available to the user it belongs to.

**Question 5: Refer to the exhibit.**



**What causes this error message when executing a stored process?**

- A. Stored process code cannot be a .TXT file.
- B. The stored process server is not running.
- C. The file that contains the stored process code is not in the specified location.
- D. An administrator deleted the stored process from the metadata.

**Question 6: In a stored process, when using a range prompt named DateRange, which macro variables would you use in your SAS code?**

- A. DateRange\_START and DateRange\_FINISH
- B. DateRange\_BEGIN and DateRange\_END
- C. DateRange\_MIN and DateRange\_MAX
- D. DateRange0 and DateRange1

**Question 7: Which data sources can be used to create reports and analysis using SAS Web Report Studio?****(Choose two.)**

- A. SAS Information Map
- B. SAS OLAP cube
- C. SAS Stored Process
- D. SAS table

**Question 8: A content developer would like to create a group of cascading prompts to use in multiple reports without recreating the prompts for each report.****What features of the prompt framework must the developer use?**

- A. Cannot create shared cascading prompts for use in multiple reports.
- B. Dynamic Prompts and Shared Prompts
- C. Cascading Prompts and Standard Groups
- D. Cascading Prompts, Standard Groups, and Shared Prompts

**Question 9: A SAS Information Map with a SAS OLAP Cube as a data source can be built from which of the following?**

- A. multiple SAS OLAP Cubes
- B. a SAS OLAP Cube and a stored process
- C. one table joined with one SAS OLAP Cube
- D. one SAS OLAP Cube only

**Question 10: Which statement is true regarding connection profiles used with the SAS platform applications?**

- A. Each SAS platform application must have its own connection profile.
- B. Connection profiles are stored on the server machine.
- C. Connection profiles are stored on the machine where the SAS application is installed.
- D. All SAS platform applications share one connection profile.

**Answers:**

Question: 1	Answer:A	Question: 2	Answer:C
Question: 3	Answer:A	Question: 4	Answer:B
Question: 5	Answer:C	Question: 6	Answer:C
Question: 7	Answer:A&C	Question: 8	Answer:D
Question: 9	Answer:D	Question: 10	Answer:C